

MEDIA RELEASE

25 October 2011

Monthly Manufacturing Performance – September 2011

Highlights

- On a year-on-year basis, Singapore's manufacturing output increased 12.8% in September 2011. Excluding biomedical manufacturing, output declined 12.5%.
- On a seasonally adjusted month-on-month basis, manufacturing output declined 0.7% in September 2011. Excluding biomedical manufacturing, output declined 2.3%.

(I) Total Manufacturing Performance

1. On a year-on-year basis, manufacturing output increased 12.8% in September 2011. Excluding biomedical manufacturing, output declined 12.5%. On a three-month moving average basis, manufacturing output in September 2011 increased 14.2% compared to the same period in 2010. On a seasonally adjusted month-on-month basis, manufacturing output declined 0.7% in September 2011. Excluding biomedical manufacturing, output declined 2.3%.

(II) Performance by cluster

2. Output of the biomedical manufacturing cluster expanded 88.4% in September 2011 year-on-year. The cluster continued to receive a boost from the strong performance in the pharmaceuticals segment (92.3% increase) where a mix of higher valued-added active pharmaceutical ingredients was produced. Output of the medical technology segment also went up by 15.2% in September with higher export demand for medical devices. On a year-to-date basis, the biomedical output increased by 21.9% compared to the same period a year ago.

3. The chemicals cluster's output expanded 7.4% year-on-year in September 2011. The specialties segment grew 28.6%, supported by new production capacities that started earlier this year. The petroleum segment also grew by 13.4% compared to the same period last year, partly due to the low base in last September when throughput was impacted by maintenance shutdowns. The other chemicals and petrochemicals segments fell 3.6% and 11.3% respectively. Cumulatively, output of the chemicals cluster grew 7.3% from January to September 2011, compared to the same period a year ago.

4. Output of the transport engineering cluster rose 4.2% year-on-year in September 2011 as output growth in the aerospace and marine & offshore engineering segments outweighed the decline in the land transport segment. The aerospace segment recorded a 9.0% increase in output as demand for engines repair and upgrading jobs of air carriers remained healthy. A higher percentage of completion in ship conversion projects contributed to a 3.5% gain in the marine & offshore engineering segment. Cumulatively, output of the cluster grew 5.2% in the first nine months of 2011, compared to the same period last year.

5. The general manufacturing cluster's output declined by 6.3% year-on-year in September 2011 as output gain in the food, beverages & tobacco segment (2.9%) was offset by declines in the printing (-2.9%) and miscellaneous industries (-11.6%) segments. The printing industry segment recorded lower output for books and periodicals. The miscellaneous industries segment recorded lower production in secondary batteries, wooden furniture and steel products. On a year-to-date basis, output of the cluster was 2.6% lower, compared to the same period last year.
6. The output of the precision engineering cluster declined 6.4% year-on-year in September 2011 as both segments within the cluster recorded lower output. The machinery & systems segment's output declined by 3.2%, due to weaker demand for semiconductor related equipment, and a fall in output of industrial automation systems and refrigerating & air-conditioning compressors. Lower production in precision engineering parts, as well as dies, moulds, jigs and other tools also led to a 11.4% contraction in the precision modules & components segment. On a year-to-date basis, the output of the precision engineering cluster was 19.8% higher than the same period a year ago.
7. The output of the electronics cluster was 26.5% lower in September 2011 compared to the same period last year. All segments within the cluster contracted amidst the weakening global demand for electronics, with the semiconductors segment posting the largest decline (of -29.9%). For the first nine months of 2011, electronics output declined by 6.9%, compared to the same period a year ago.
8. The next monthly manufacturing performance media release will be issued on 25th November 2011.

Editors' Note: Updates on Monthly Manufacturing Output are available on <http://www.news.gov.sg> and <http://www.sedb.com>

*For media enquiries, please contact Ms Karen Lin (Tel: 68326587/ Handphone: 96230355/
Email: karen_lin@edb.gov.sg)*

*For further information, please contact Mr Chong Tse Ming (Tel 68326677/ Handphone:
91547959/ Email: quin_chong@edb.gov.sg)*

About the Singapore Economic Development Board

The Singapore Economic Development Board (EDB) is the lead government agency for planning and executing strategies to enhance Singapore's position as a global business centre. EDB dreams, designs and delivers solutions that create value for investors and companies in Singapore. Our mission is to create for Singapore, sustainable economic growth with vibrant business and good job opportunities. EDB's 'Host to Home' strategy articulates how we are positioning Singapore for the future. It is about extending Singapore's value proposition to businesses not just to help them improve their bottom line, but also to help them grow their top line through establishing and deepening strategic activities in Singapore to drive their business, innovation and talent objectives in Asia and globally.

For more information on how EDB can help your business, please visit www.sedb.com

GROWTH OF MANUFACTURING SECTOR

CHART 1

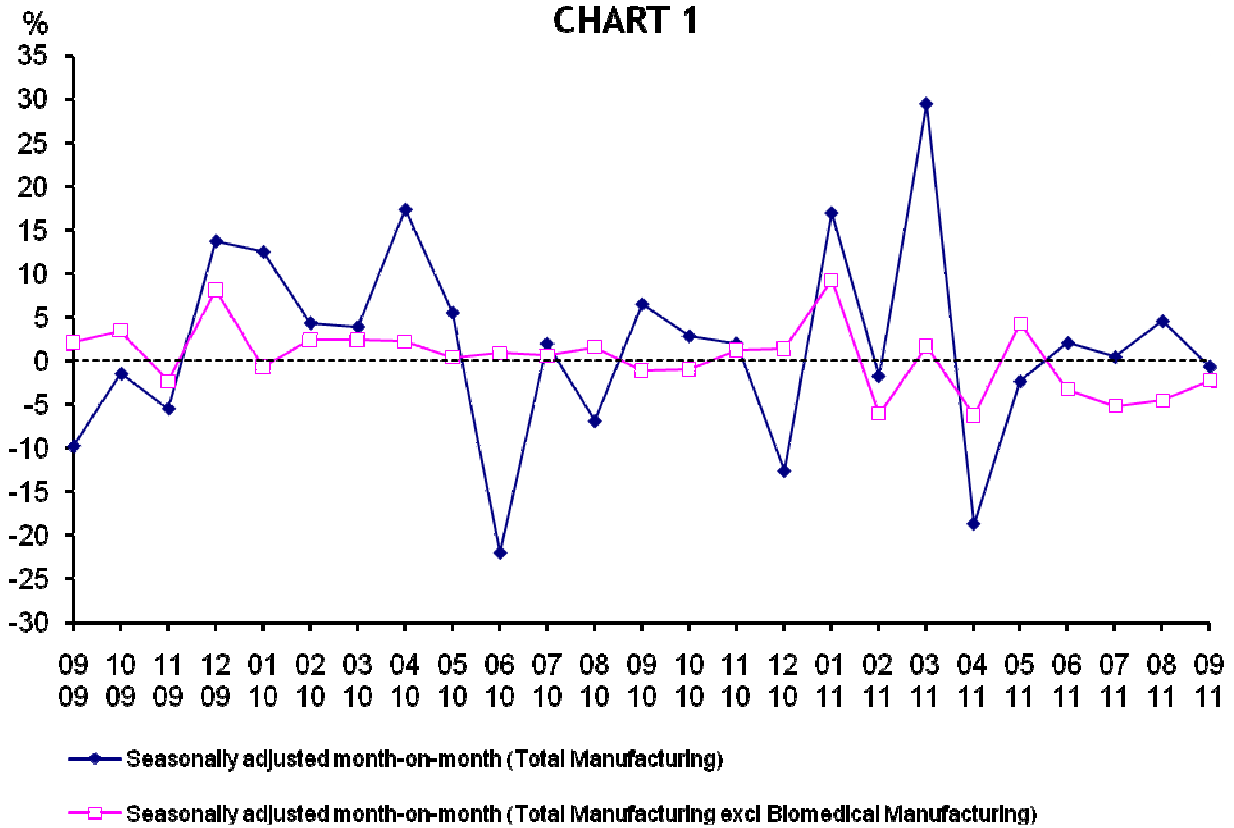


CHART 2

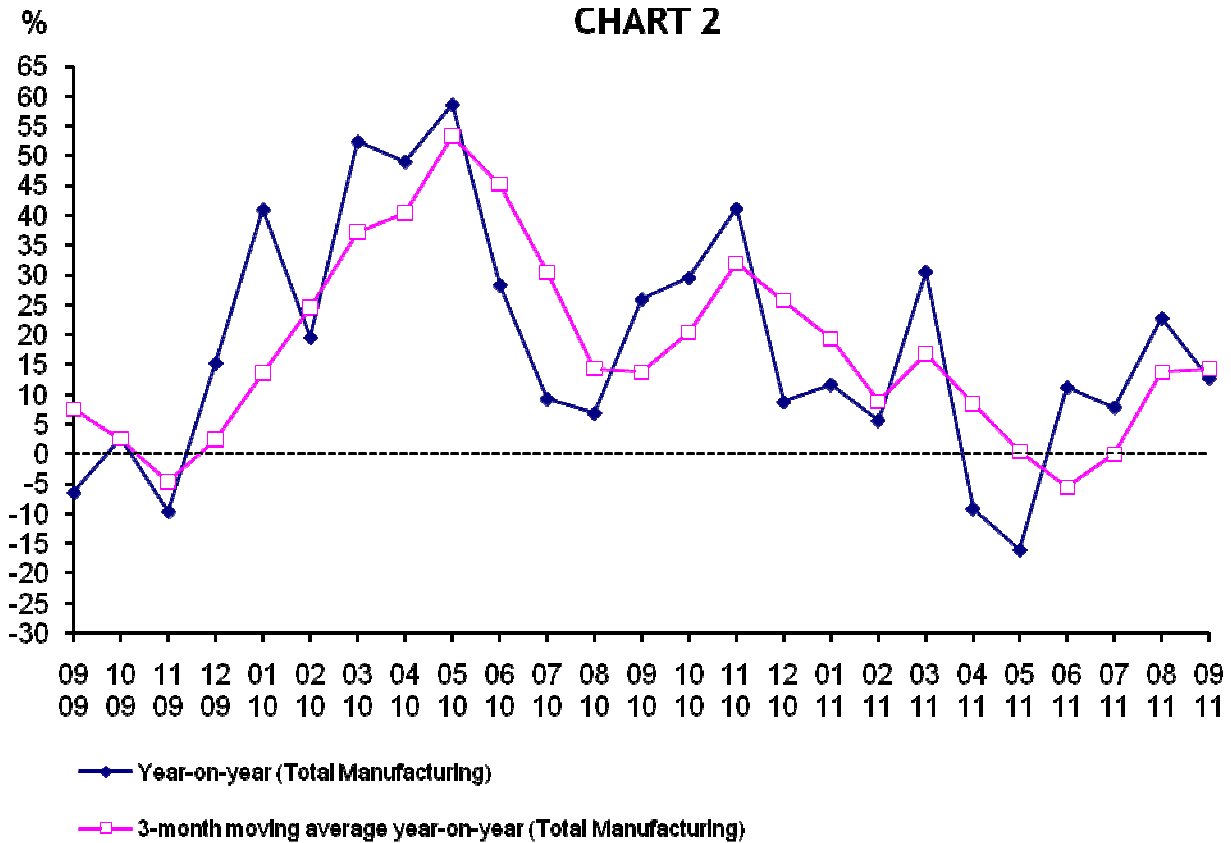


TABLE 1 : MANUFACTURING SECTOR GROWTH

Period	NSA INDEX Total Mfg (2007 = 100)	YOY GROWTH (%) Total Mfg	SA INDEX Total Mfg	SA MOM GROWTH (%) Total Mfg	SA INDEX Total Mfg excl Biomedical Mfg	SA MOM GROWTH (%) Total Mfg excl Biomedical Mfg	
2009	Sep	96.6	-6.4	92.0	-9.8	92.8	2.1
	Oct	93.3	2.6	90.6	-1.5	96.0	3.4
	Nov	85.9	-9.6	85.6	-5.5	93.7	-2.4
	Dec	101.0	15.3	97.3	13.7	101.3	8.1
2010	Jan	105.5	41.0	109.4	12.4	100.6	-0.7
	Feb	101.7	19.6	114.1	4.3	103.0	2.4
	Mar	120.4	52.4	118.5	3.9	105.4	2.3
	Apr	137.9	49.1	139.0	17.3	107.7	2.2
	May	142.3	58.6	146.6	5.5	108.1	0.4
	Jun	117.6	28.4	114.3	-22.0	109.0	0.8
	Jul	120.3	9.3	116.5	1.9	109.6	0.6
	Aug	109.7	6.9	108.4	-7.0	111.3	1.6
	Sep	121.7	26.0	115.4	6.5	110.0	-1.2
	Oct	120.9	29.6	118.6	2.8	108.9	-1.0
	Nov	121.3	41.2	120.9	1.9	110.2	1.2
	Dec	109.9	8.8	105.6	-12.7	111.7	1.4
2011	Jan	117.8	11.7	123.4	16.9	122.0	9.2
	Feb	107.5	5.7	121.2	-1.8	114.6	-6.1
	Mar	157.3	30.6	156.8	29.4	116.4	1.6
	Apr	125.4	-9.1	127.5	-18.7	109.1	-6.3
	May	119.5	-16.0	124.5	-2.4	113.7	4.2
	Jun	130.8	11.2	127.0	2.0	109.9	-3.3
	Jul	129.8	7.9	127.5	0.4	104.2	-5.2
	Aug	134.7	22.8	133.3	4.5	99.4	-4.6
	Sep *	137.3	12.8	132.4	-0.7	97.1	-2.3

* - Preliminary
NSA Index - Non seasonally adjusted index
MOM - Month-on-month
YOY - Year-on-year

TABLE 2: PERFORMANCE BY CLUSTERS

Industry Cluster	2010 Value Added Share (%)	% change over corresponding period of previous year				% change of 3-month moving average over corresponding period of previous year		
		Jul 11	Aug 11	Sep 11*	Cum Jan - Sep 11	Jul 11	Aug 11	Sep 11*
Electronics	31.4	-16.8	-21.4	-26.5	-6.9	-11.3	-17.8	-21.7
Semiconductors	20.9	-19.6	-21.5	-29.9	-10.2	-16.1	-21.3	-23.8
Computer Peripherals	3.9	-10.3	-29.6	-16.0	4.9	0.6	-15.3	-19.0
Data Storage	3.5	-17.6	-18.2	-16.8	-13.5	-3.2	-6.4	-17.5
Infocomms & Consumer Electronics	2.0	17.1	0.6	-14.4	40.1	32.5	14.2	-0.6
Other Electronic Modules & Components	1.1	-24.2	-29.6	-23.9	-20.7	-25.0	-25.2	-25.9
Biomedical Manufacturing	19.6	47.1	150.4	88.4	21.9	0.5	71.5	89.3
Pharmaceuticals	17.1	48.0	161.6	92.3	22.8	0.3	75.3	93.3
Medical Technology	2.5	24.3	5.9	15.2	3.7	4.3	9.3	14.6
Chemicals	10.7	5.7	-1.2	7.4	7.3	7.1	5.1	3.9
Petroleum	2.2	7.7	8.9	13.4	10.8	13.2	13.3	9.9
Petrochemicals	3.5	-3.7	-26.3	-11.3	-3.3	-1.8	-9.7	-13.8
Specialties	4.0	17.5	22.4	28.6	18.6	13.4	17.9	22.8
Others	1.1	-0.7	-8.3	-3.6	0.8	0.1	-6.6	-4.2

TABLE 2: PERFORMANCE BY CLUSTERS (Continued)

Industry Cluster	2010 Value Added Share (%)	% change over corresponding period of previous year				% change of 3-month moving average over corresponding period of previous year		
		Jul 11	Aug 11	Sep 11*	Cum Jan - Sep 11	Jul 11	Aug 11	Sep 11*
Precision Engineering	13.4	9.3	4.0	-6.4	19.8	26.9	16.7	1.9
Machinery & Systems	7.4	20.9	15.3	-3.2	41.4	50.9	33.6	9.9
Precision Modules & Components	6.0	-5.3	-10.2	-11.4	-5.1	-2.9	-5.2	-8.9
Transport Engineering	14.7	1.2	0.9	4.2	5.2	3.9	4.7	2.1
Marine & Offshore Engineering	8.6	-7.3	0.9	3.5	1.8	-0.5	3.2	-1.0
Aerospace	5.0	7.2	5.5	9.0	8.7	8.2	7.5	7.2
Land	1.1	21.8	-25.7	-17.4	4.5	4.0	-3.7	-10.1
General Manufacturing Industries	10.3	-8.5	-7.8	-6.3	-2.6	-6.8	-6.5	-7.5
Printing	2.4	-3.1	4.2	-2.9	-1.6	-3.2	0.0	-0.7
Food, Beverages & Tobacco	3.3	-0.6	0.9	2.9	3.0	1.7	0.6	1.0
Miscellaneous Industries	4.6	-13.8	-15.2	-11.6	-5.6	-11.8	-11.8	-13.5
Total Manufacturing	100.0	7.9	22.8	12.8	7.7	0.0	13.7	14.2
Manufacturing excluding Biomedical Manufacturing	80.4	-6.4	-10.3	-12.5	1.2	-0.3	-5.1	-9.7

TABLE 3: MONTHLY INDEX OF INDUSTRIAL PRODUCTION BY INDUSTRY CLUSTER, SEPTEMBER 2009 TO SEPTEMBER 2011

Period	Electronics						Biomedical Manufacturing			Chemicals					
	Total	Semi-conductors	Computer Peripherals	Data Storage	Infocomms & Consumer Electronics	Other Electronic Modules & Components	Total	Pharmaceuticals	Medical Technology	Total	Petroleum	Petrochemicals	Specialties	Others	
2007 = 100															
2009	Sep	103.1	101.9	179.5	88.2	38.5	108.9	88.9	87.6	105.3	90.8	82.6	97.0	96.9	88.4
	Oct	108.3	116.0	170.7	82.2	38.0	104.8	73.0	70.2	108.1	92.3	85.2	99.7	97.5	83.2
	Nov	95.7	109.5	109.9	78.7	40.2	99.3	58.8	55.4	101.5	93.4	84.5	104.4	96.0	87.4
	Dec	114.0	135.7	116.3	97.7	46.3	100.0	84.3	81.0	125.8	98.9	85.5	111.9	106.9	91.0
2010	Jan	102.4	127.4	89.5	83.2	35.9	96.9	138.1	142.0	89.0	93.4	77.6	106.5	101.9	94.6
	Feb	93.6	117.0	81.2	78.9	30.7	82.2	150.8	155.4	92.9	83.2	69.3	97.8	89.2	77.8
	Mar	111.9	141.9	88.3	90.7	43.6	92.2	163.4	166.2	128.2	99.0	86.1	108.0	108.9	97.6
	Apr	116.1	157.0	76.3	82.1	35.1	93.2	243.6	255.1	99.4	100.9	84.7	115.7	112.3	89.6
	May	103.1	131.4	87.6	74.4	31.8	104.1	275.7	288.1	119.7	101.2	82.6	119.0	113.3	87.6
	Jun	121.7	160.2	101.3	72.6	44.4	99.6	133.1	134.3	116.8	98.1	78.2	112.1	112.2	98.7
	Jul	121.4	160.2	96.6	83.2	38.4	97.1	139.6	144.3	80.7	102.9	90.6	118.5	106.6	93.7
	Aug	121.9	158.3	107.7	82.1	39.4	95.4	98.2	98.4	95.3	101.1	85.3	119.2	106.4	93.6
	Sep	129.3	172.1	97.1	83.5	52.8	86.4	132.7	136.1	88.9	97.4	80.7	115.7	104.7	88.6
	Oct	118.7	159.0	91.3	80.0	36.3	83.3	151.4	155.3	100.9	102.8	93.6	118.0	105.1	84.0
	Nov	122.0	155.4	107.9	98.1	45.1	78.5	156.8	160.1	115.4	102.4	94.2	116.3	101.4	93.1
	Dec	124.0	156.3	115.4	81.5	60.2	82.5	85.5	83.8	106.6	108.2	101.8	123.4	105.3	90.9
2011	Jan	123.8	155.3	105.8	82.5	75.9	74.1	127.6	130.1	95.2	110.8	94.8	122.5	126.2	97.8
	Feb	102.1	129.7	90.1	49.8	66.2	68.3	142.4	146.5	90.9	99.0	88.4	108.8	109.9	81.2
	Mar	119.2	145.4	123.9	72.5	63.2	90.1	292.9	306.6	121.5	107.3	87.5	112.3	133.6	105.1
	Apr	108.3	136.4	101.9	67.9	51.5	81.0	189.0	195.8	103.4	95.6	75.0	101.8	121.8	92.9
	May	103.1	126.9	104.1	67.3	51.9	74.3	160.7	164.6	111.5	106.1	89.7	115.2	123.5	99.0
	Jun	103.1	123.5	96.4	87.0	55.0	77.6	184.9	190.2	118.9	108.9	97.4	114.0	127.8	88.3
	Jul	101.0	128.7	86.6	68.6	45.0	73.7	205.3	213.6	100.3	108.8	97.6	114.1	125.3	93.0
	Aug	95.8	124.3	75.9	67.2	39.6	67.2	245.9	257.4	100.9	99.8	92.9	87.9	130.3	85.9
	Sep*	95.1	120.5	81.6	69.5	45.2	65.8	250.0	261.7	102.5	104.6	91.5	102.5	134.6	85.5

TABLE 3: MONTHLY INDEX OF INDUSTRIAL PRODUCTION BY INDUSTRY CLUSTER, SEPTEMBER 2009 TO SEPTEMBER 2011 (Continued)

Period	Precision Engineering			Transport Engineering				General Manufacturing Industries				Total Manu- facturing	Manufacturing excluding Biomedical Manufacturing	
	Total	Machinery & Systems	Precision Modules & Components	Total	Marine & Offshore Engineering	Aerospace	Land	Total	Printing	Food, Beverages & Tobacco	Miscella- neous Industries			
2007 = 100														
2009	Sep	89.2	93.8	85.3	100.7	104.3	96.5	101.6	105.1	85.5	107.6	113.9	96.6	98.9
	Oct	83.7	82.5	84.7	90.6	88.7	90.7	102.7	108.4	91.0	106.6	118.1	93.3	99.4
	Nov	84.4	86.1	82.9	90.1	90.7	88.0	98.2	105.6	93.4	103.5	113.0	85.9	94.0
	Dec	98.1	110.5	87.6	100.9	96.1	93.8	180.4	104.6	88.0	109.0	111.0	101.0	106.0
2010	Jan	84.7	83.2	86.0	87.0	81.1	94.5	83.1	100.5	80.8	108.8	106.7	105.5	95.8
	Feb	75.8	76.8	74.9	86.9	81.8	95.7	69.8	83.2	63.9	93.5	88.2	101.7	87.0
	Mar	113.0	129.8	98.8	97.8	88.5	108.8	97.1	108.0	88.5	112.3	115.9	120.4	107.6
	Apr	98.7	105.4	93.0	91.1	81.3	104.3	79.0	108.1	89.3	103.9	119.7	137.9	106.3
	May	99.1	111.9	88.3	97.1	91.0	102.5	107.1	112.1	87.5	107.0	127.2	142.3	102.5
	Jun	119.3	150.4	93.0	96.7	82.7	111.1	107.8	114.0	81.9	113.5	130.7	117.6	113.0
	Jul	116.1	142.2	93.9	102.5	96.9	111.3	88.3	118.6	86.7	115.4	136.5	120.3	114.5
	Aug	111.6	135.4	91.5	101.2	90.3	110.5	121.6	115.5	80.3	113.3	134.5	109.7	113.1
	Sep	131.3	176.5	92.9	102.1	96.6	105.0	123.8	113.0	85.2	111.7	127.9	121.7	118.4
	Oct	115.5	146.0	89.7	95.5	81.7	109.4	109.5	114.5	92.0	111.8	127.2	120.9	111.8
	Nov	112.1	145.7	83.7	90.5	80.2	94.5	140.5	104.5	92.6	109.7	108.0	121.3	110.7
	Dec	123.7	158.1	94.6	110.6	102.2	116.1	136.3	105.9	87.3	113.3	111.9	109.9	117.2
2011	Jan	119.3	157.8	86.8	94.7	79.4	111.0	103.7	110.4	83.2	123.7	117.6	117.8	114.9
	Feb	97.5	126.9	72.7	90.6	78.9	102.1	103.2	86.1	64.7	88.1	95.9	107.5	97.1
	Mar	132.6	178.3	93.9	107.2	100.1	114.2	114.7	115.4	87.9	118.3	127.7	157.3	116.8
	Apr	125.0	171.4	85.7	98.6	85.2	115.7	88.0	102.3	82.4	108.0	109.6	125.4	106.4
	May	135.6	194.7	85.5	95.4	81.9	110.4	99.5	102.3	82.6	111.6	107.7	119.5	107.2
	Jun	162.0	243.8	92.7	108.8	97.6	121.9	108.1	110.4	81.4	115.2	122.6	130.8	114.6
	Jul	126.9	171.9	88.9	103.7	89.8	119.2	107.5	108.5	84.0	114.7	117.7	129.8	107.2
	Aug	116.1	156.1	82.2	102.0	91.2	116.6	90.3	106.5	83.7	114.3	114.1	134.7	101.5
	Sep *	122.9	170.9	82.3	106.4	100.0	114.5	102.2	105.9	82.7	114.9	113.1	137.3	103.6