



Ministry of Education
SINGAPORE

PRESS RELEASE

22 December 2009

PERFORMANCE BY ETHNIC GROUP 1999–2008

1. The Ministry of Education releases data on the performance of the major ethnic groups annually. The objective is to provide feedback to the communities on how their children fared in the national examinations.
2. The following performance charts are attached:
 - a. Three sets of charts showing the performance of the various ethnic groups in the PSLE, GCE 'O' and 'A' Level Examinations for the past ten years (1999–2008)¹.
 - b. One chart on the percentage of a primary one (P1) cohort admitted to post-secondary institutions².

PERFORMANCE IN PSLE (CHARTS A1–A5)

Performance by Overall Measure

3. PSLE candidates continued to perform well, with an overall percentage pass rate of above 95 per cent. See Chart A1.

Performance by Subject

4. The overall proportion of merged stream students who scored A*–C in English Language and Mother Tongue Language continued to be high, above 95 per cent, while the proportion who scored A*–C in Mathematics and Science remained above 80 per cent and 90 per cent respectively. See Charts A2–A5.

¹ The percentages in these charts are based on school candidates who sat for the respective examinations.

² The percentages are based on students who were enrolled in P1 ten years ago.

PERFORMANCE IN GCE 'O' LEVEL (CHARTS B1–B5)

Performance by Overall Measure

5. The proportion of GCE 'O' level students with at least 3 'O' level passes remained close to 95 per cent while the proportion with at least 5 'O' level passes remained above 80 per cent. See Charts B1 and B2.

Performance by Subject

6. The overall pass rates for English Language have remained high, at above 85 per cent, while pass rates in Mother Tongue Language and Mathematics have remained comparable with the previous years (above 95 per cent and 85 per cent respectively). See Charts B3–B5.

PERFORMANCE IN GCE 'A' LEVEL (CHARTS C1–C3)

Performance by Overall Measure

7. The proportion of GCE 'A' level students who obtained at least 3 'H2' passes and passed General Paper or Knowledge and Inquiry continued to be above 85 per cent. See Chart C1.

Performance by Subject

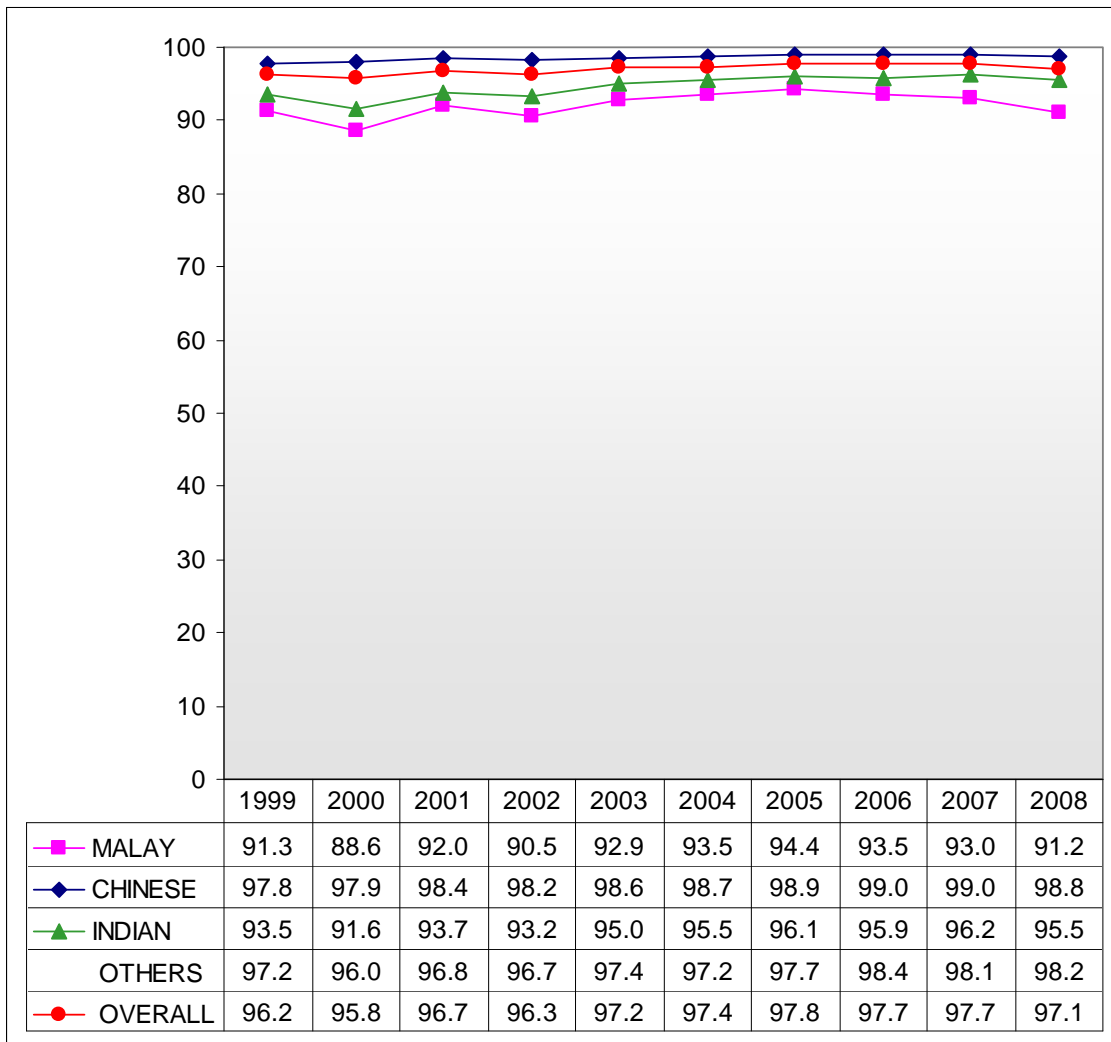
8. The overall pass rates in General Paper (GP) or Knowledge and Inquiry and Mother Tongue Language continued to be high, at above 90 per cent. See Charts C2 and C3.

PERCENTAGE OF P1 COHORT ADMITTED TO POST-SECONDARY INSTITUTIONS (CHART D)

9. The percentage of a P1 cohort admitted to post-secondary institutions³, including private educational organisations, has continued to rise, and is now above 90 per cent. See Chart D.

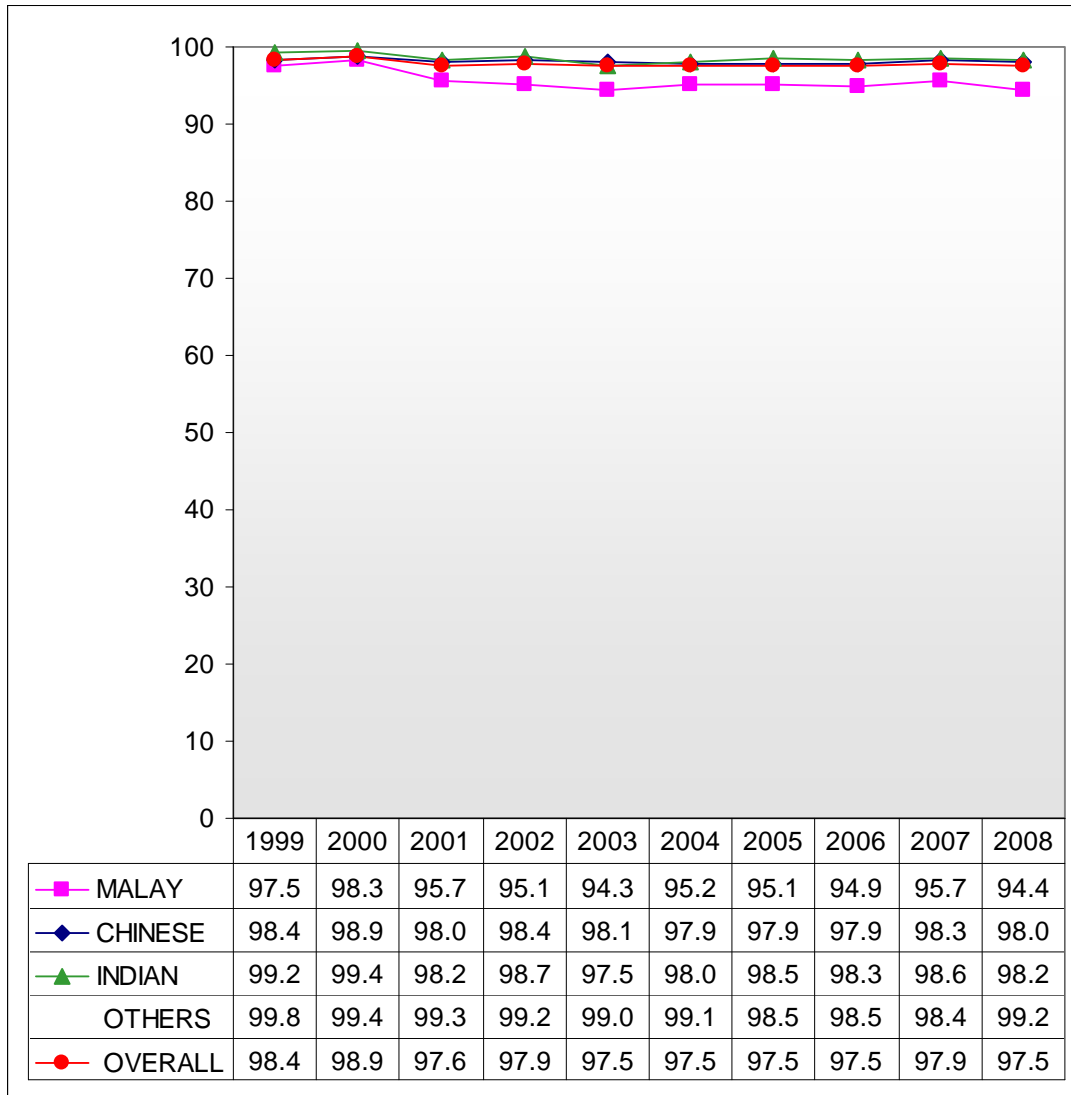
³ Junior colleges, Centralised Institute, polytechnics, ITE, LASALLE College of the Arts, Nanyang Academy of Fine Arts (NAFA) and other private educational organisations.

Chart A1: Percentage of Students Who Passed PSLE



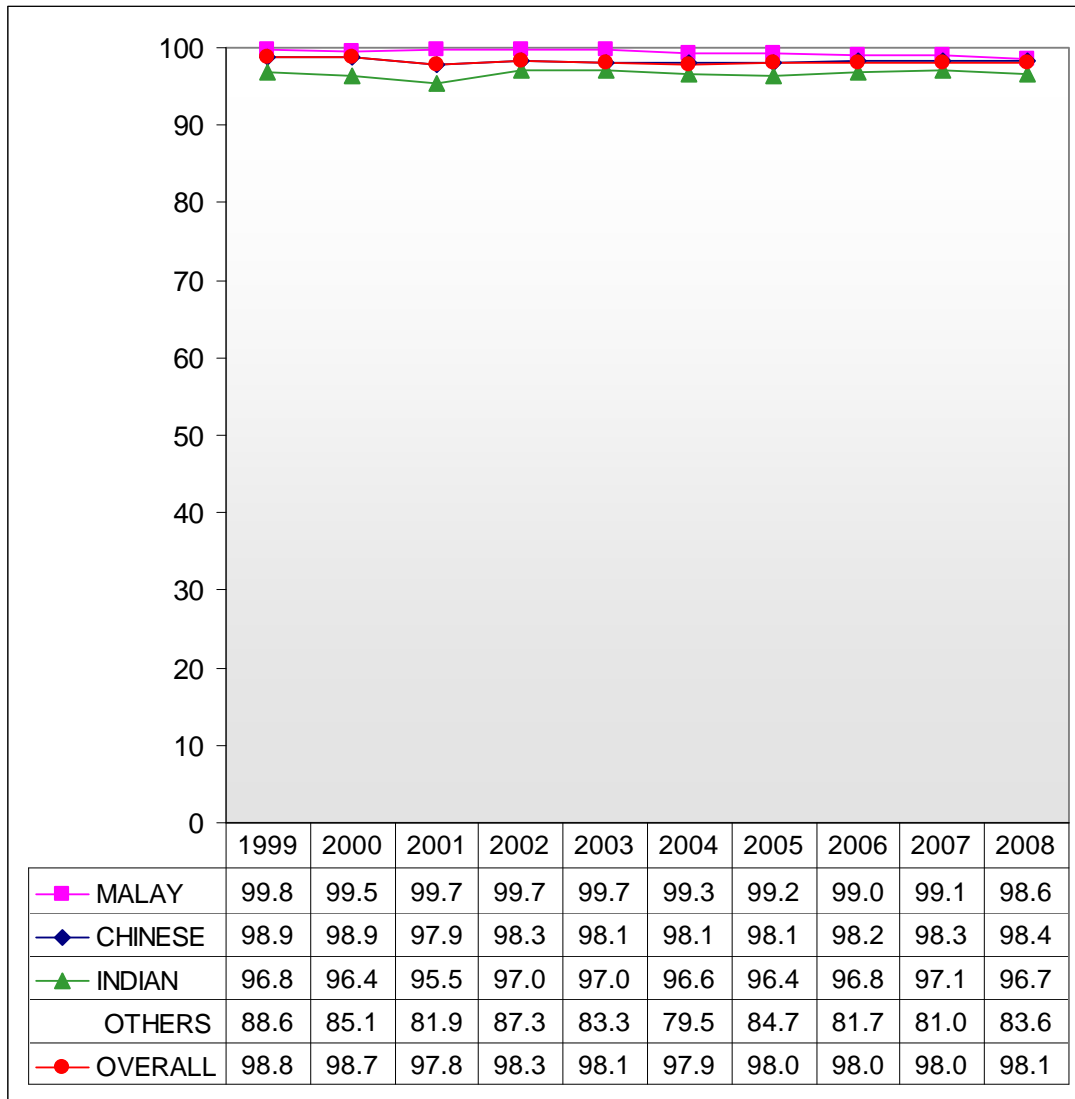
- 1 Percentages are based on all students, including those in the EM3 stream.
- 2 The first batch of students under the adjustment of the promotion criteria from P5 to P6 sat for PSLE in 2001.

Chart A2: Percentage of PSLE Students Who Scored A*–C in English Language



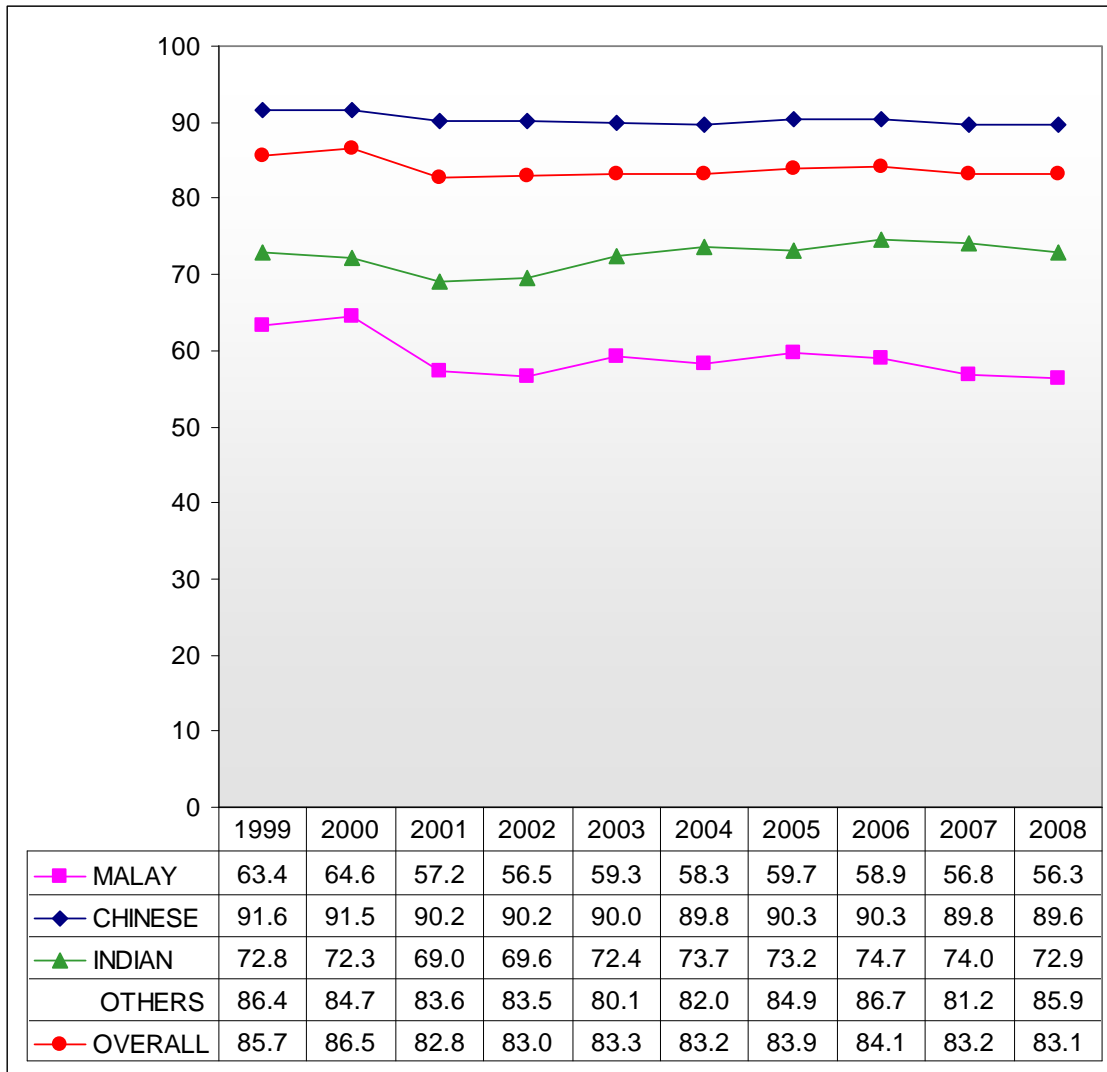
- 1 Percentages exclude EM3 students.
- 2 The first batch of students under the adjustment of the promotion criteria from P5 to P6 sat for PSLE in 2001.

Chart A3: Percentage of PSLE Students Who Scored A*–C in Mother Tongue Language



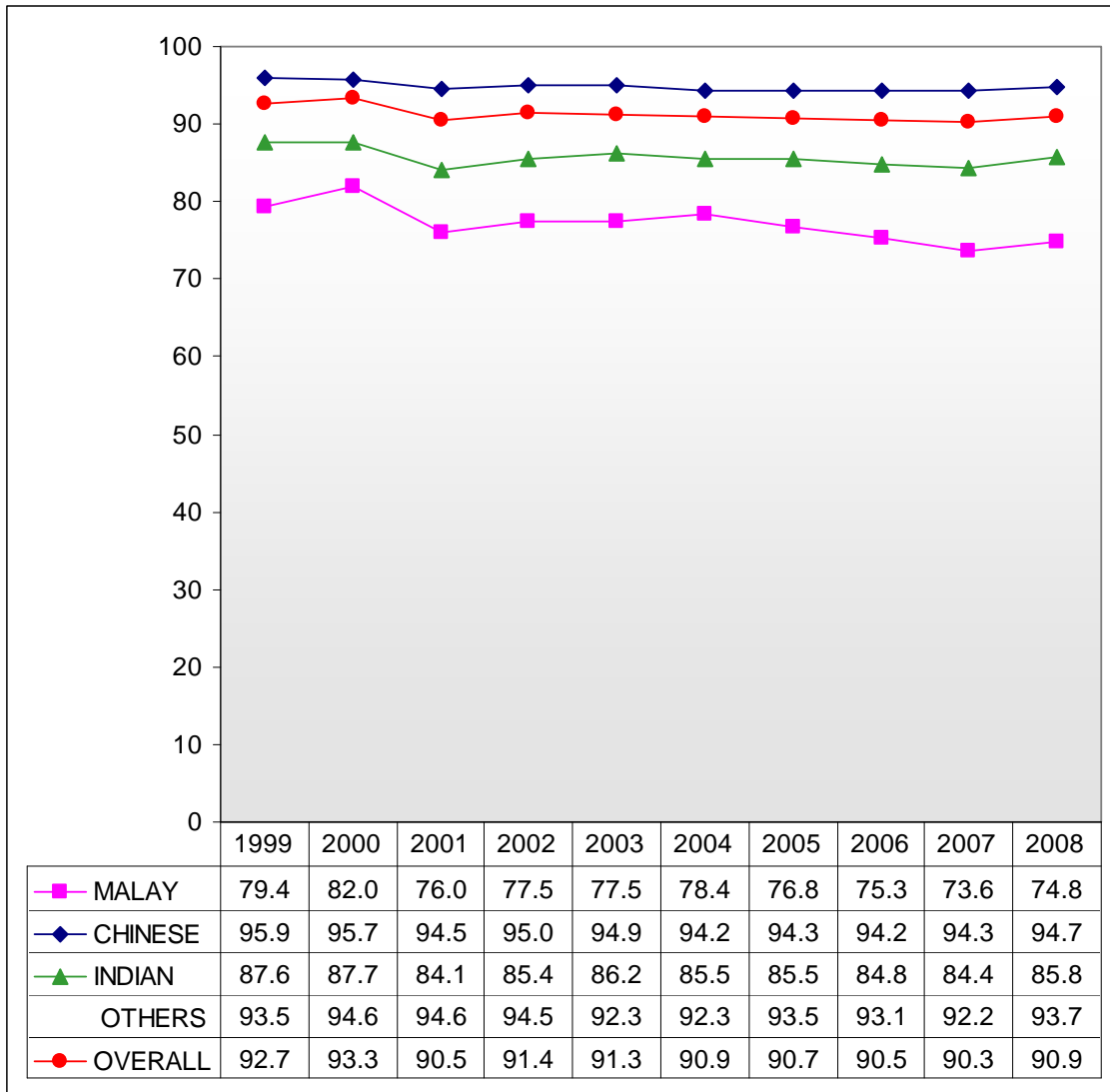
- 1 Percentages exclude EM3 students.
- 2 The first batch of students under the adjustment of the promotion criteria from P5 to P6 sat for PSLE in 2001.

Chart A4: Percentage of PSLE Students Who Scored A*–C in Mathematics



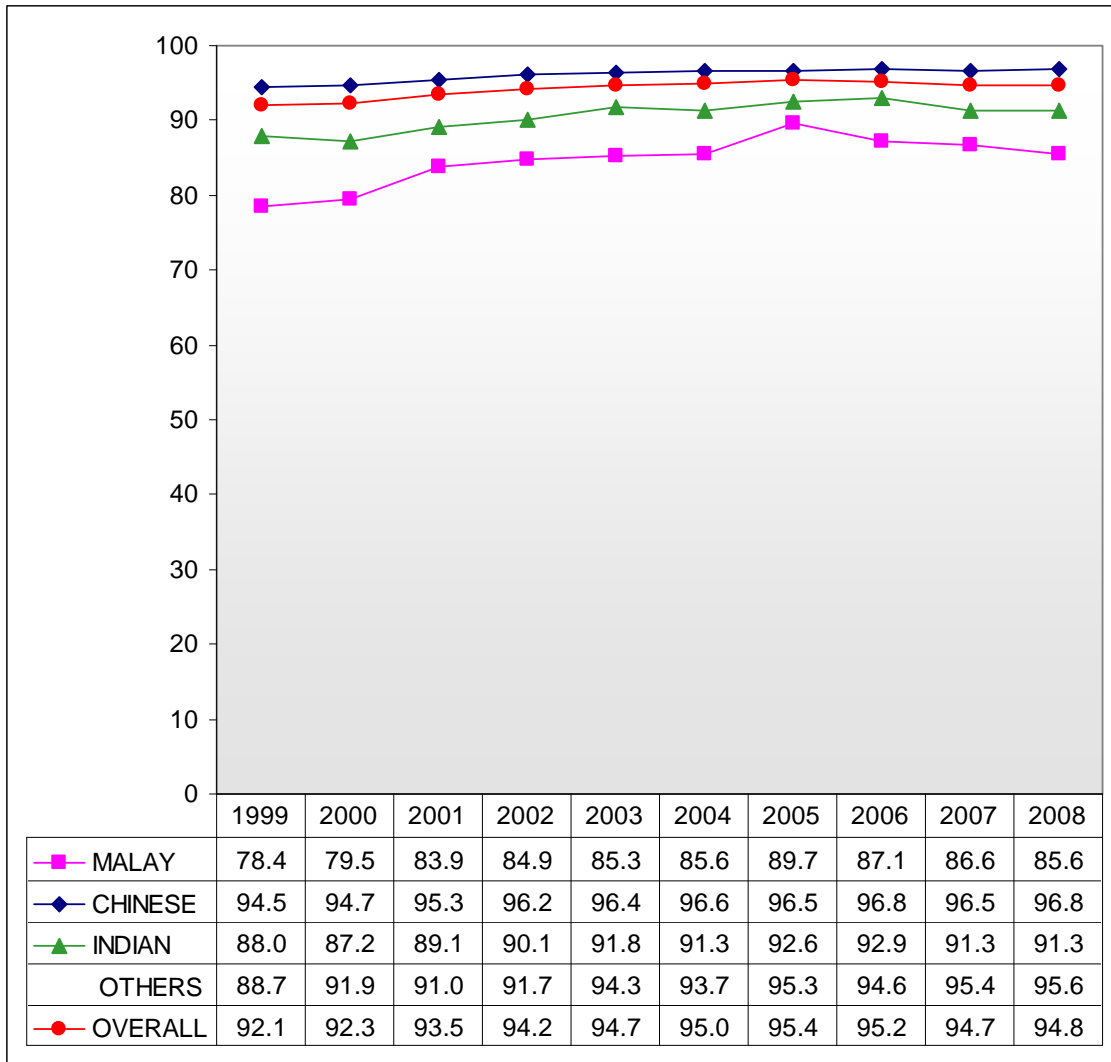
- 1 Percentages exclude EM3 students.
- 2 The first batch of students under the adjustment of the promotion criteria from P5 to P6 sat for PSLE in 2001.

Chart A5: Percentage of PSLE Students Who Scored A*–C in Science



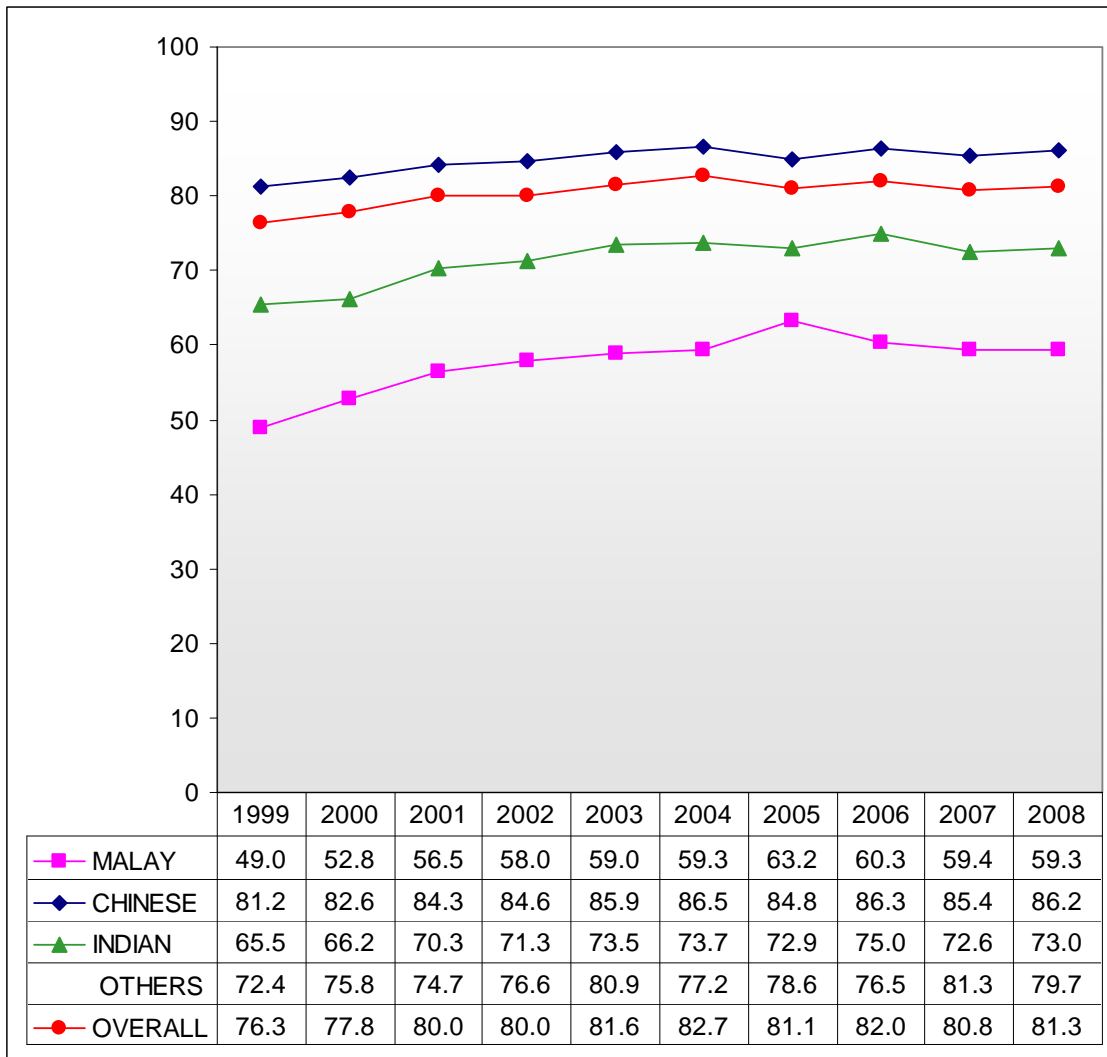
- 1 Percentages exclude EM3 students.
- 2 The first batch of students under the adjustment of the promotion criteria from P5 to P6 sat for PSLE in 2001.

Chart B1: Percentage of GCE 'O' Level Students with At Least 3 'O' Level Passes



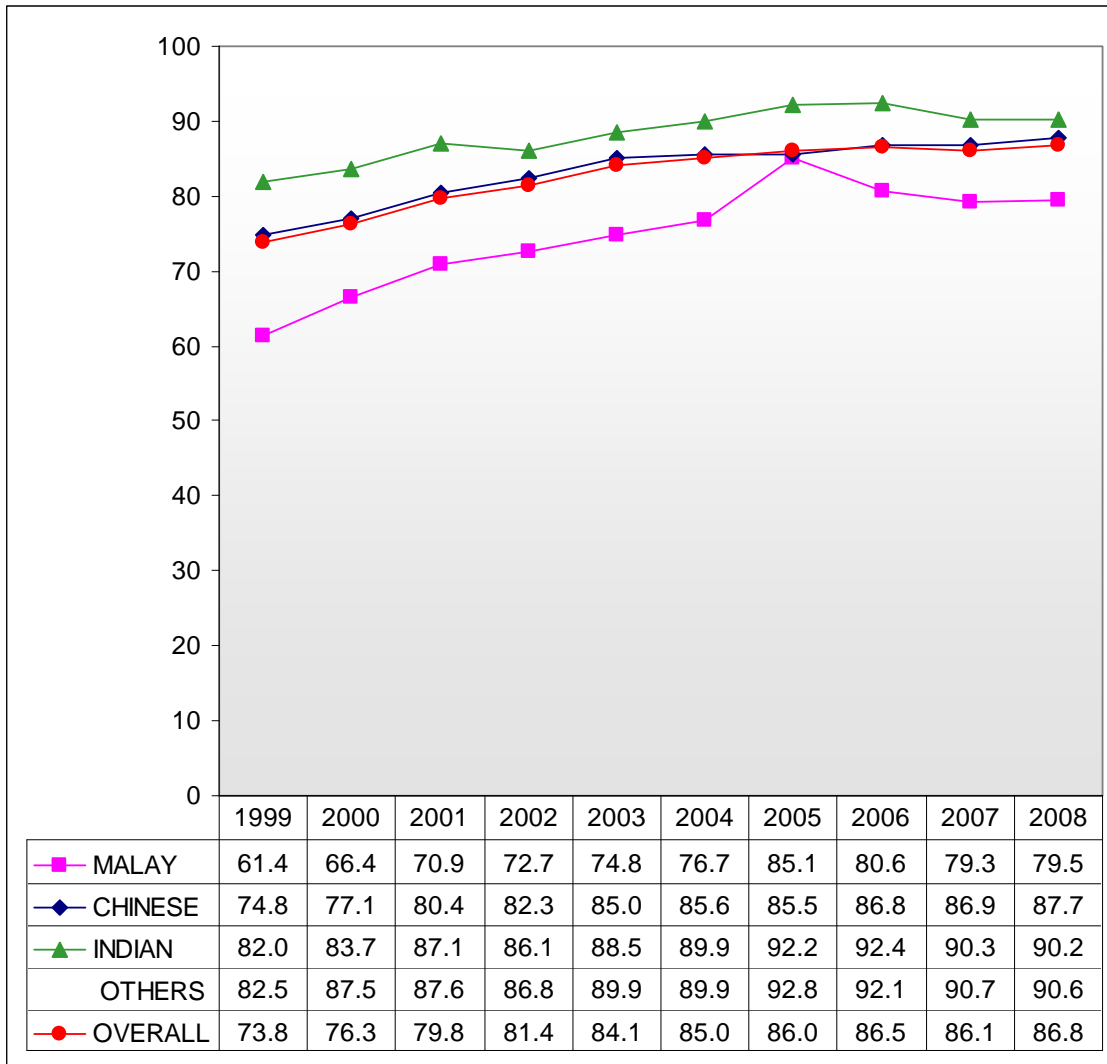
1 Figures from 2005 onwards exclude IP students.

Chart B2: Percentage of GCE 'O' Level Students with At Least 5 'O' Level Passes



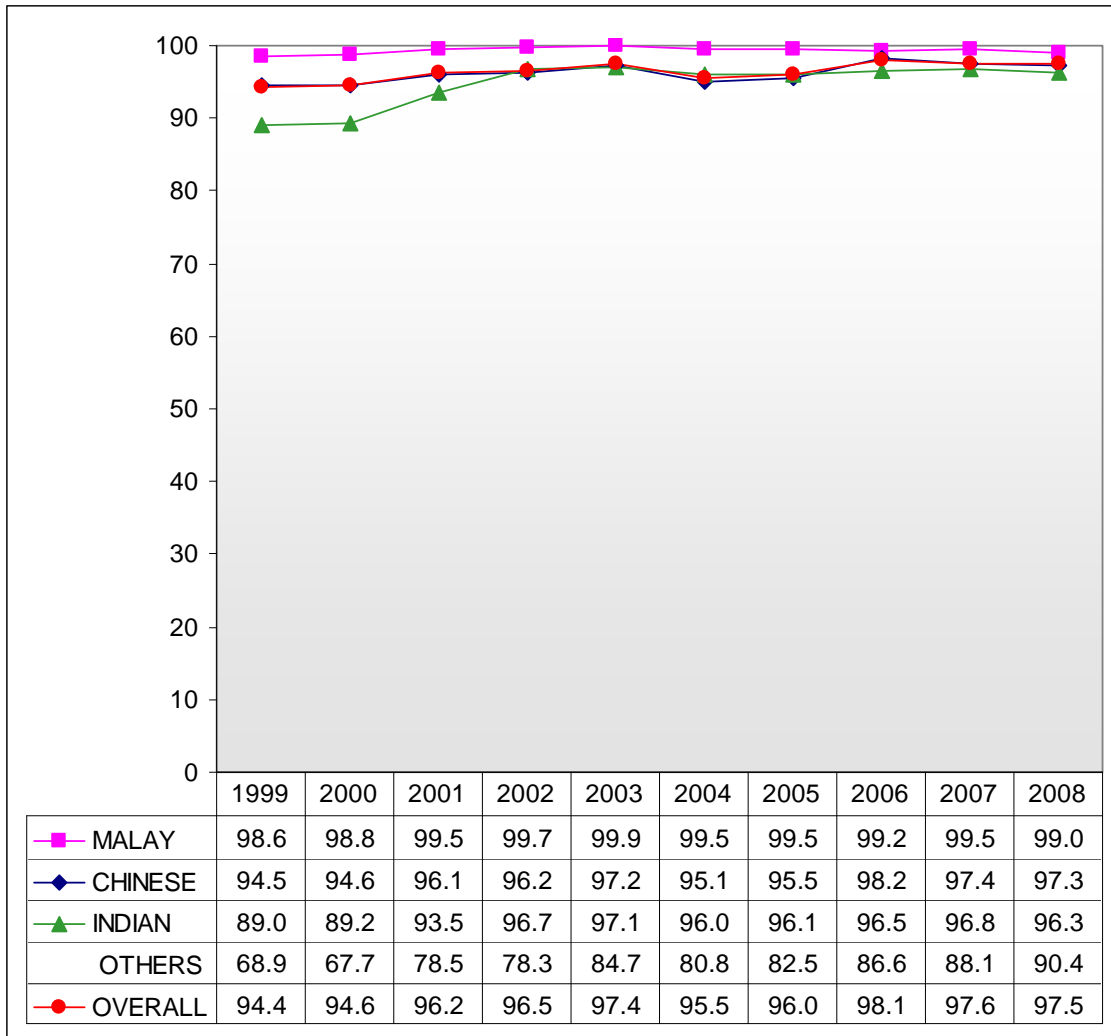
1 Figures from 2005 onwards exclude IP students.

Chart B3: Percentage of GCE 'O' Level Students Who Passed English Language



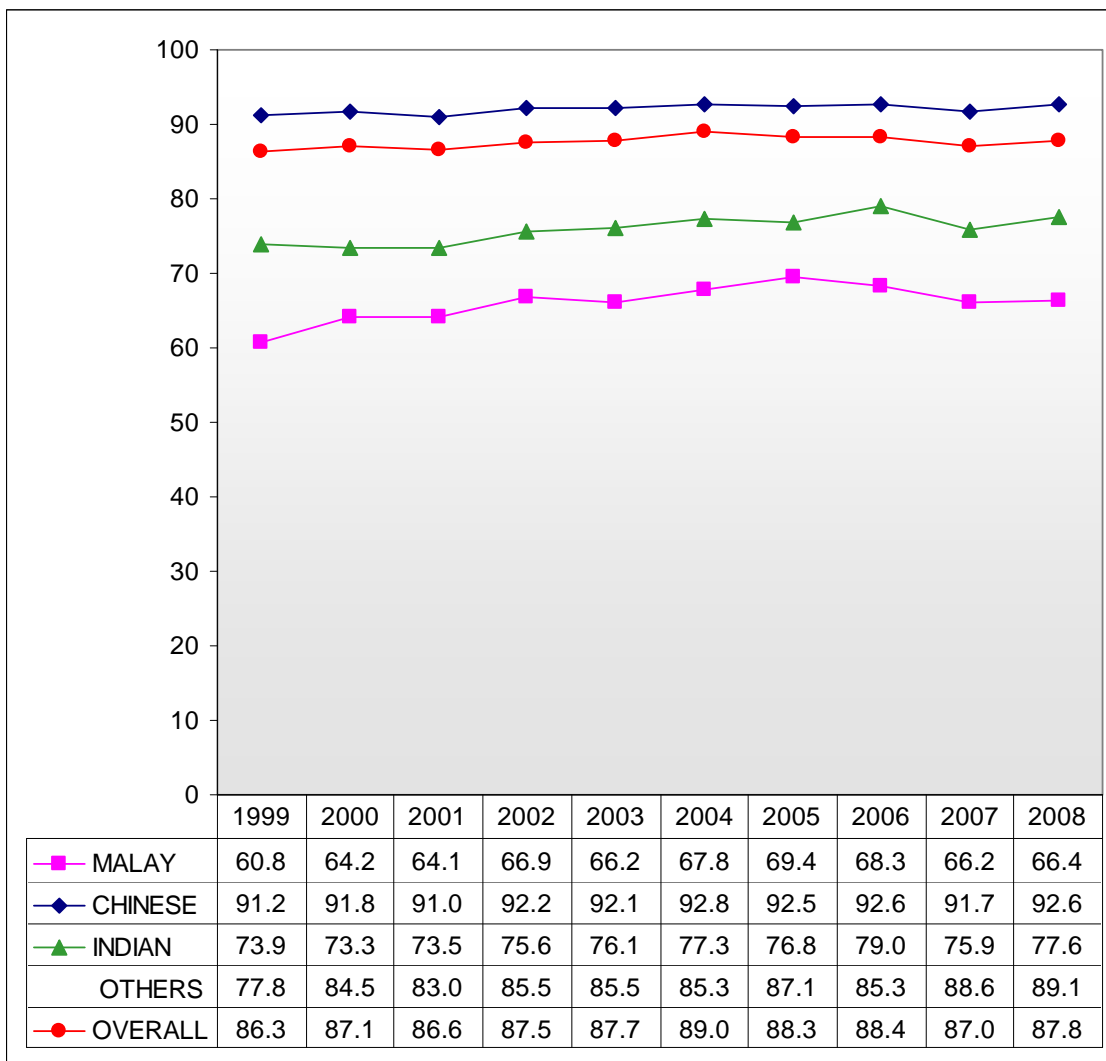
1 Figures from 2005 onwards exclude IP students.

Chart B4: Percentage of GCE 'O' Level Students Who Passed Mother Tongue Language



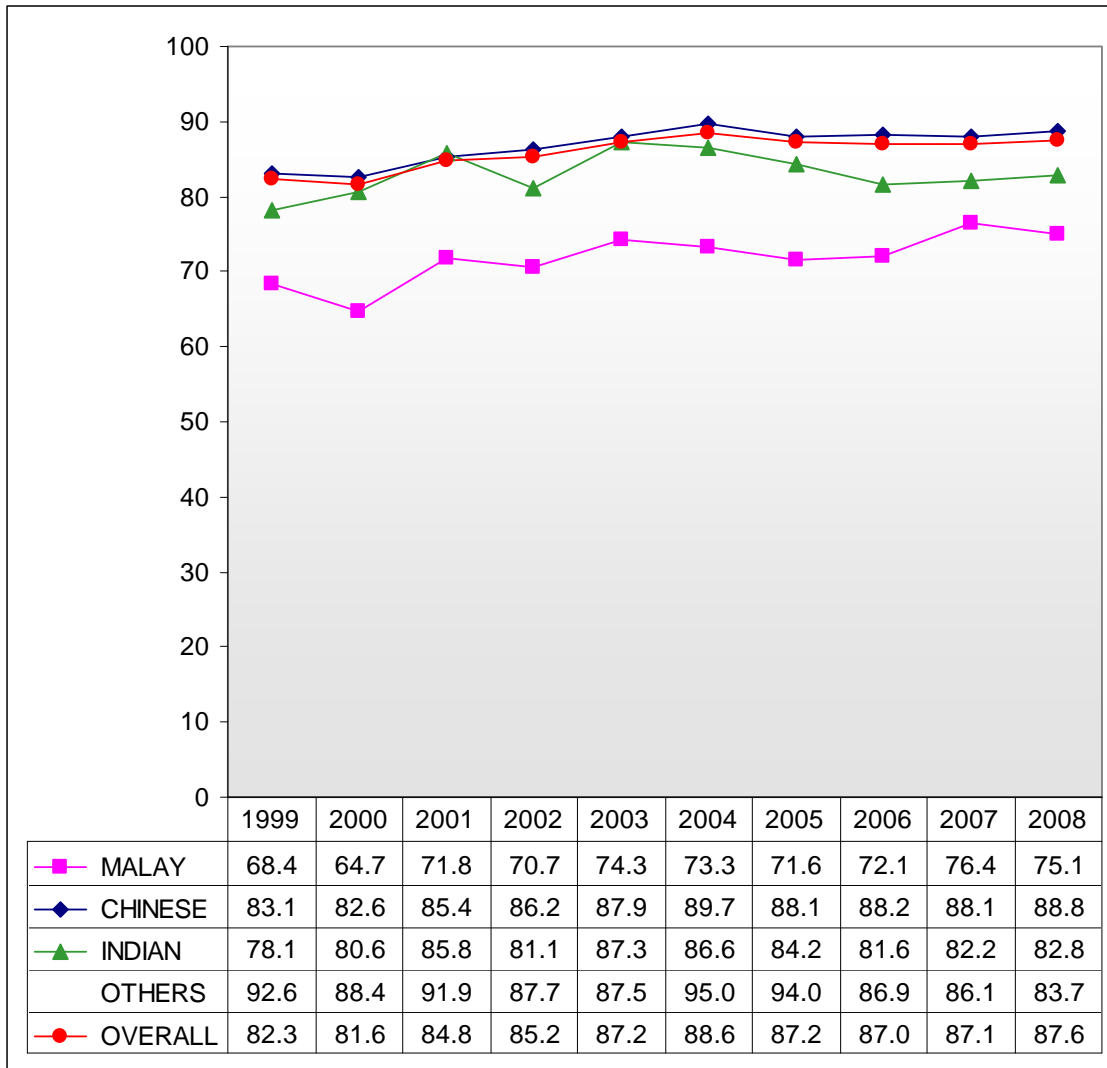
1 Figures from 2005 onwards exclude IP students.

Chart B5: Percentage of GCE 'O' Level Students Who Passed Mathematics



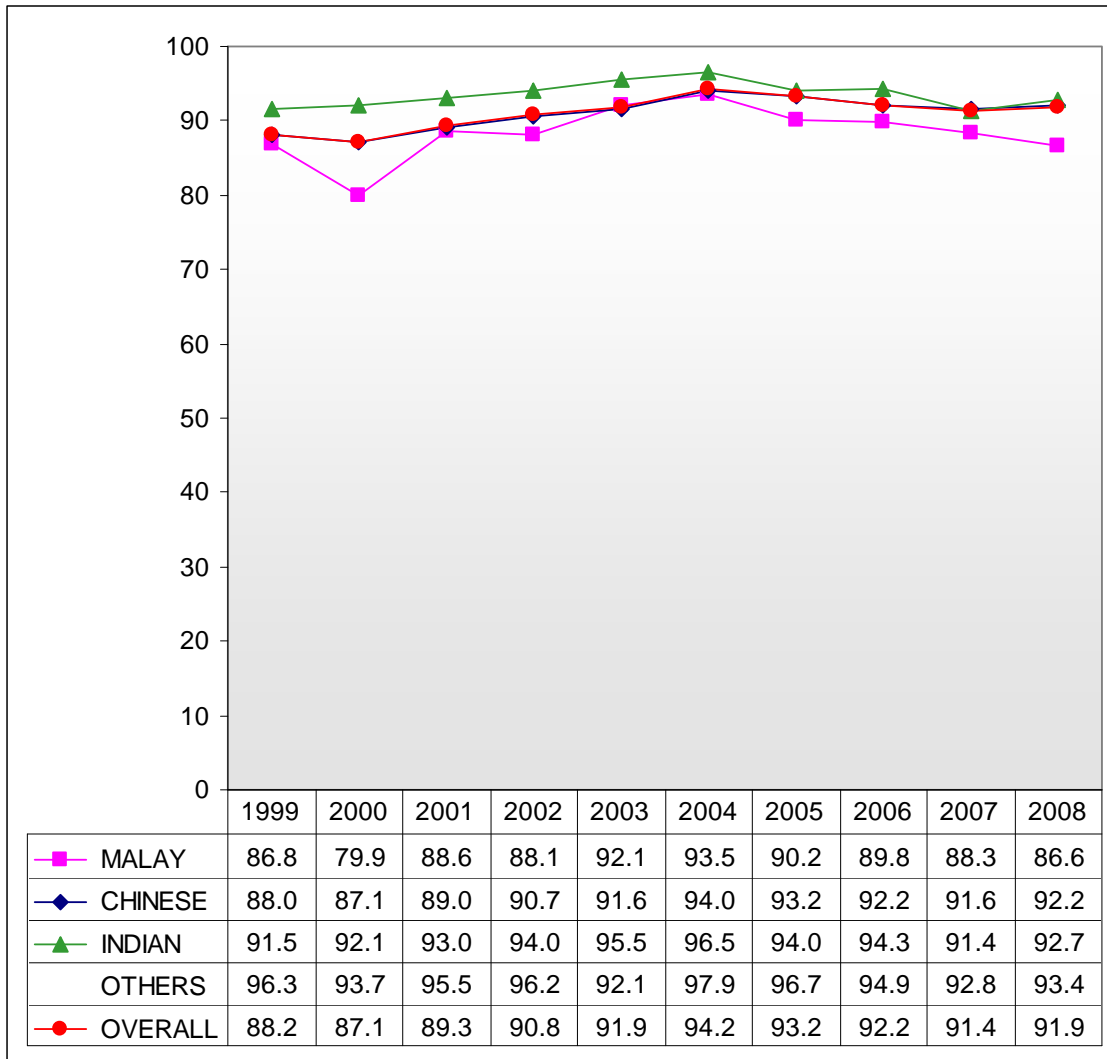
1 Figures from 2005 onwards exclude IP students.

Chart C1: Percentage of GCE 'A' Level Students with At Least 3 'A'/H2' Passes and Pass in General Paper or Knowledge and Inquiry



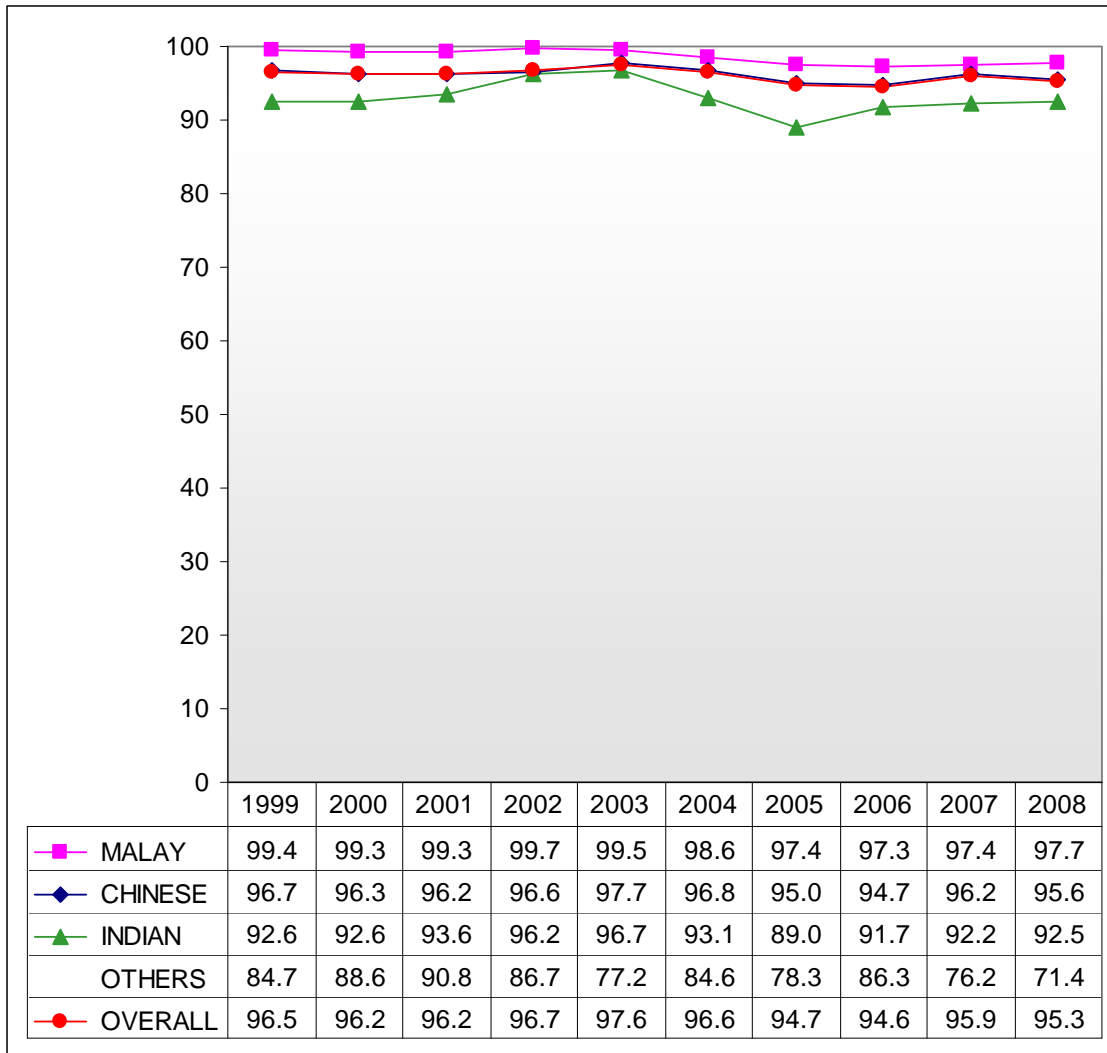
1 Figures for 2007 and 2008 include students taking either the new or old syllabus.

Chart C2: Percentage of GCE 'A' Level Students Who Passed General Paper or Knowledge and Inquiry



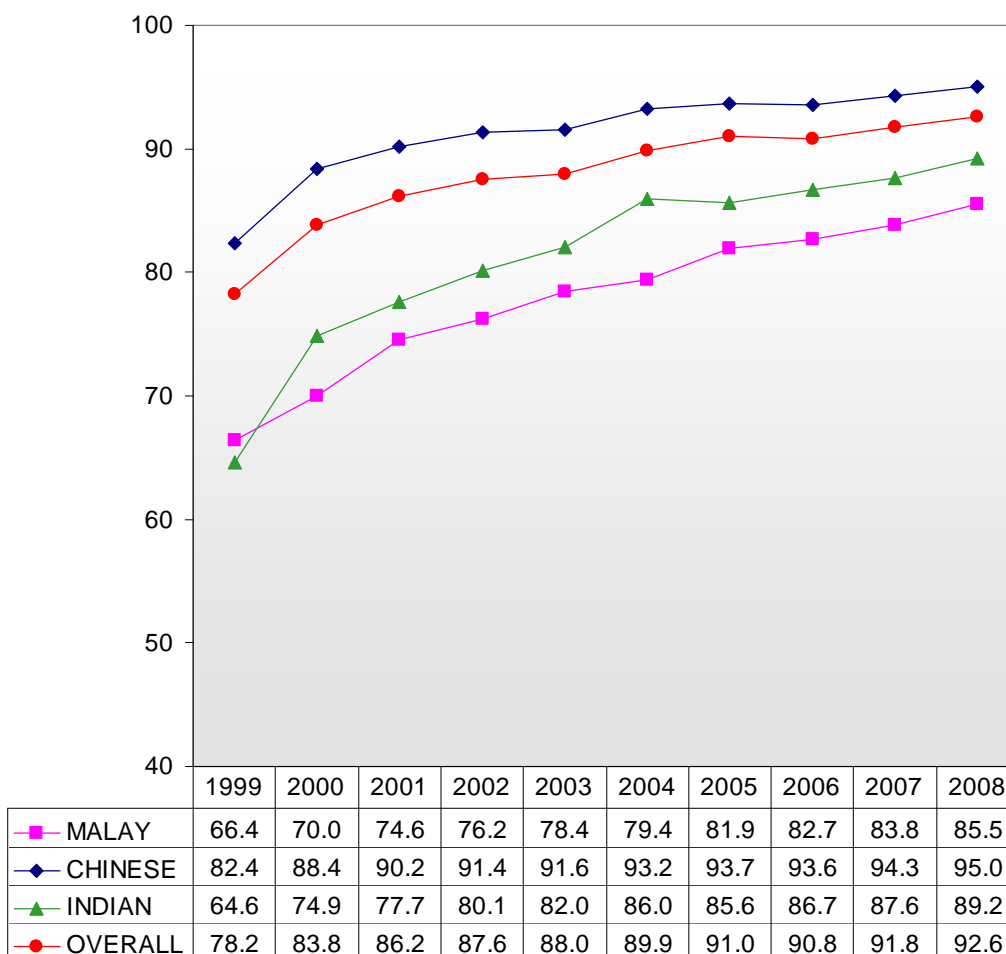
1 Figures for 2007 and 2008 include students taking either the new or old syllabus.

Chart C3: Percentage of GCE 'A' Level Students Who Passed Mother Tongue Language at 'AO'/'H1' Level



1 Figures for 2007 and 2008 include students taking either the new or old syllabus.

Chart D: Percentage of P1 Cohort Admitted to Post-Secondary Institutions¹



- 1 Junior colleges, Centralised Institute, polytechnics, ITE, LASALLE College of the Arts, Nanyang Academy of Fine Arts and other private educational organisations offering courses at post-secondary level.
- 2 Figures for 2004–2008 are preliminary.
- 3 Figures from 2000 include participation in LASALLE College of the Arts, Nanyang Academy of Fine Arts and other private educational organisations, and also take into account students who left the country.

MINISTRY OF EDUCATION